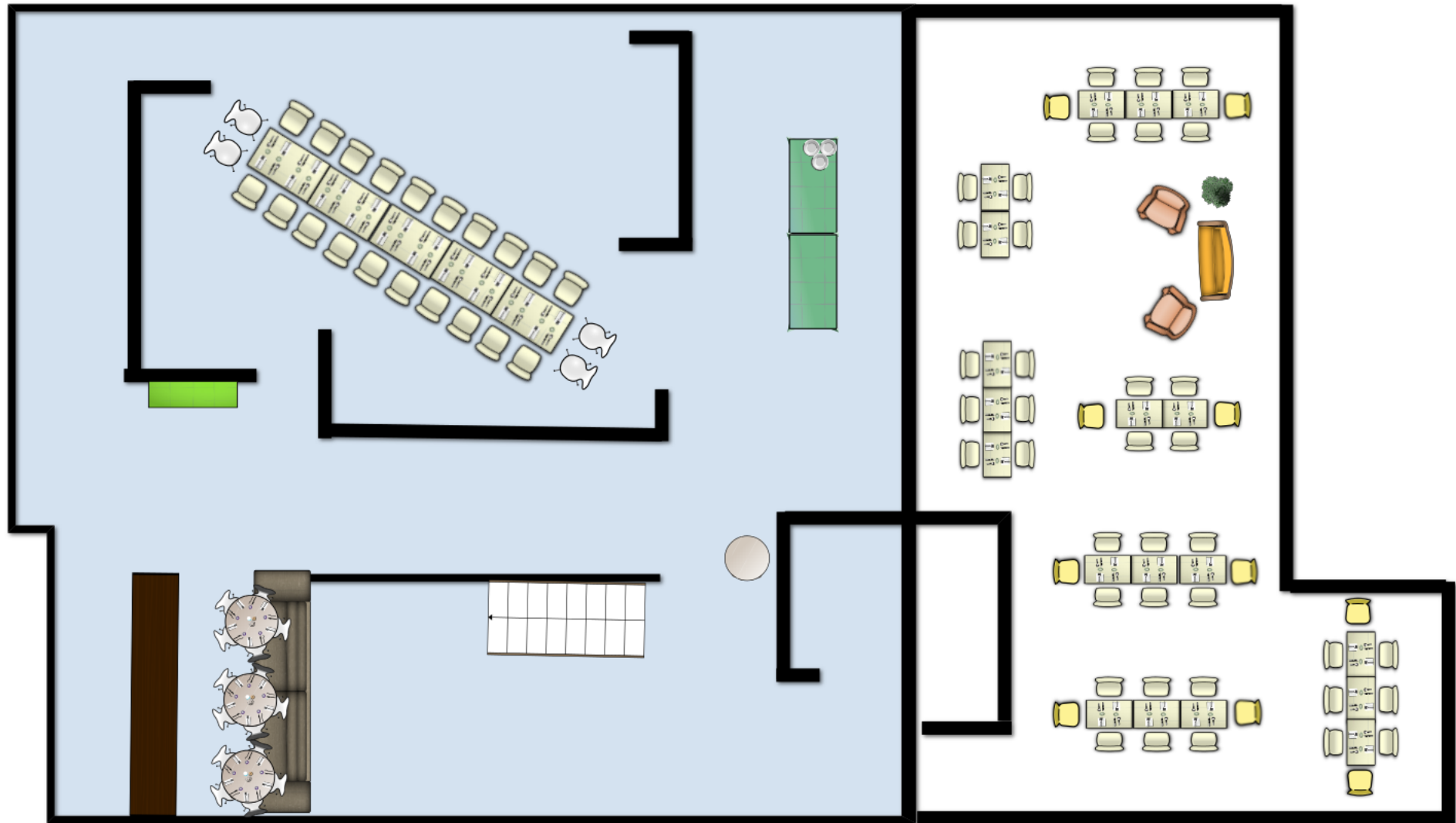


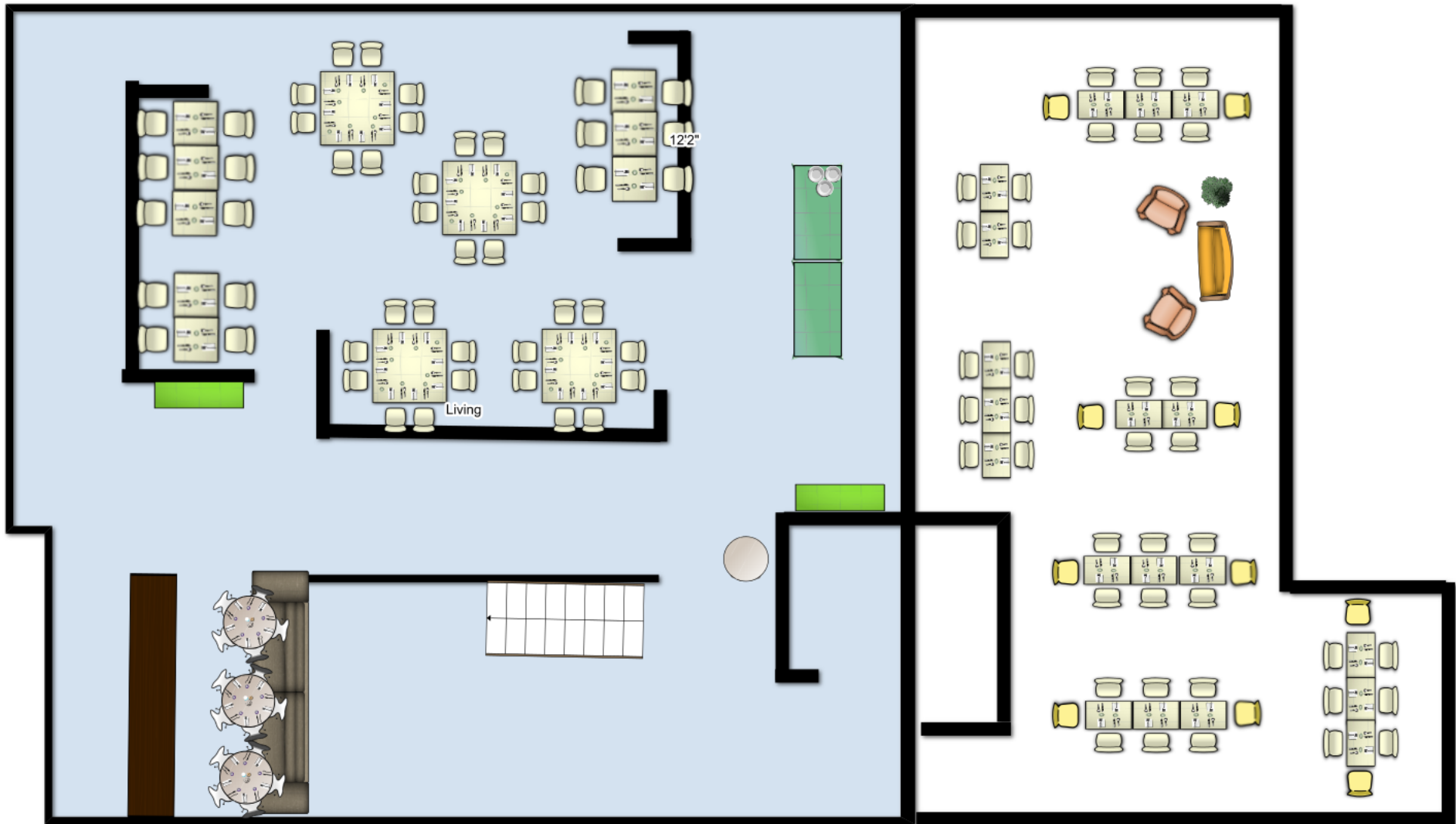
VUE | 517 SW 2nd Street | Corvallis, Oregon 97330 | 541-740-2340 | www.vuecorvallis.com



Plan C1 | 5TH Floor Dining

Capacity 24

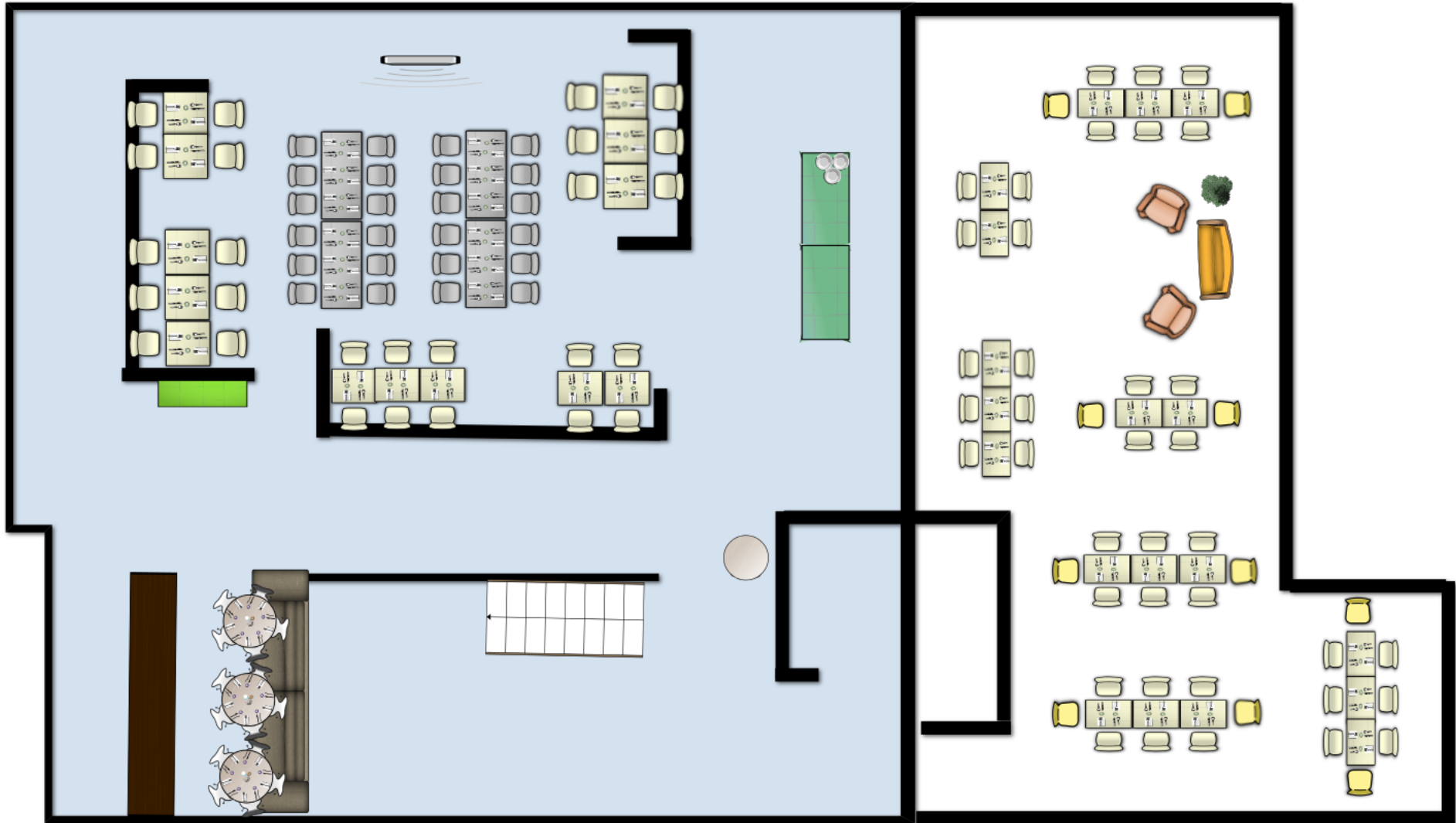
VUE | 517 SW 2nd Street | Corvallis, Oregon 97330 | 541-740-2340 | www.vuecorvallis.com



Plan C2 | 5TH Floor Dining

Capacity 48

VUE | 517 SW 2nd Street | Corvallis, Oregon 97330 | 541-740-2340 | www.vuecorvallis.com



Plan C3 | 5TH Floor Dining and Presentation

Capacity 50

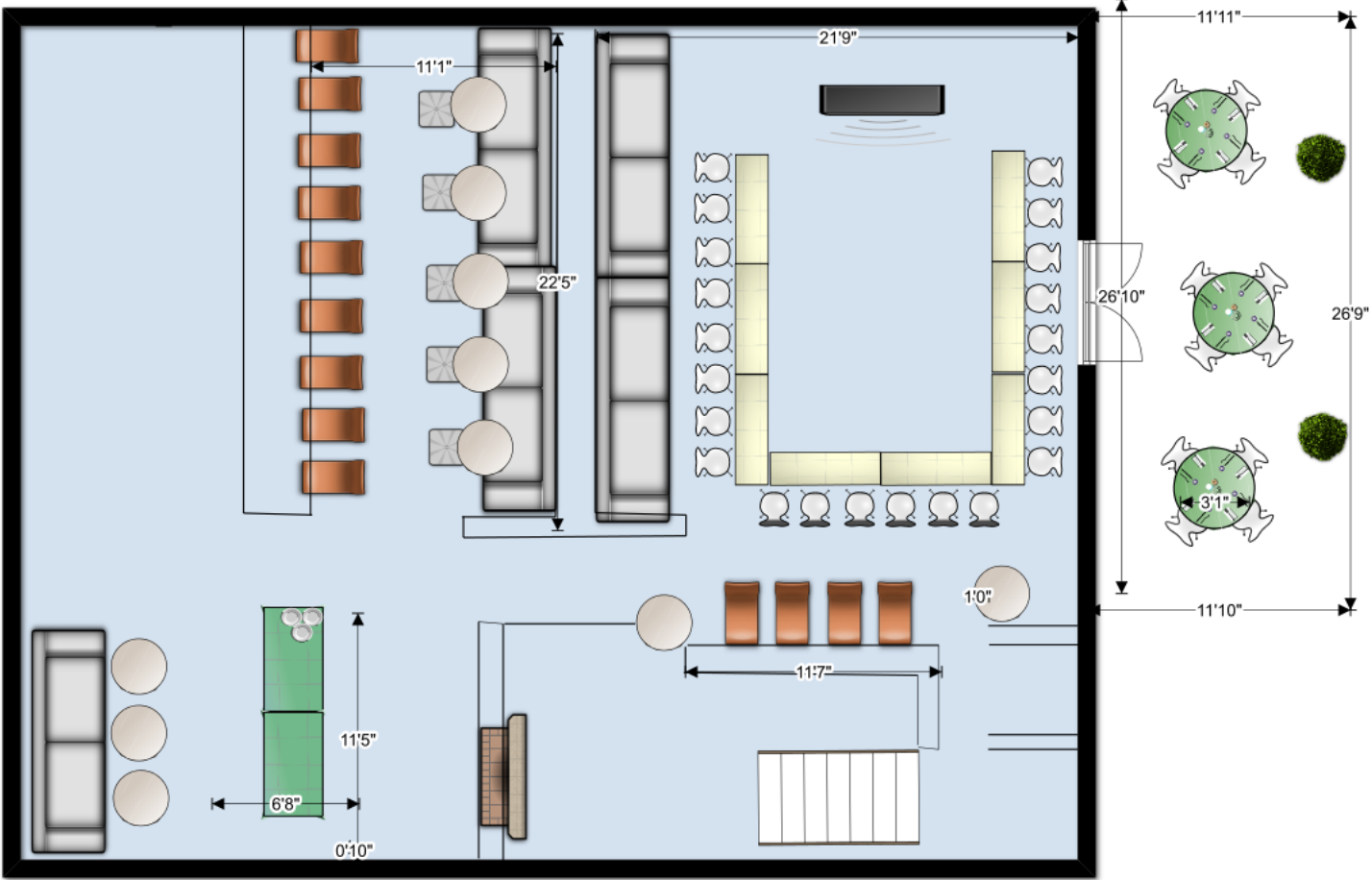
VUE | 517 SW 2nd Street | Corvallis, Oregon 97330 | 541-740-2340 | www.vuecorvallis.com



Plan C4 | 5TH Floor Dining

Capacity 150 (100 indoors, 50 on terrace)

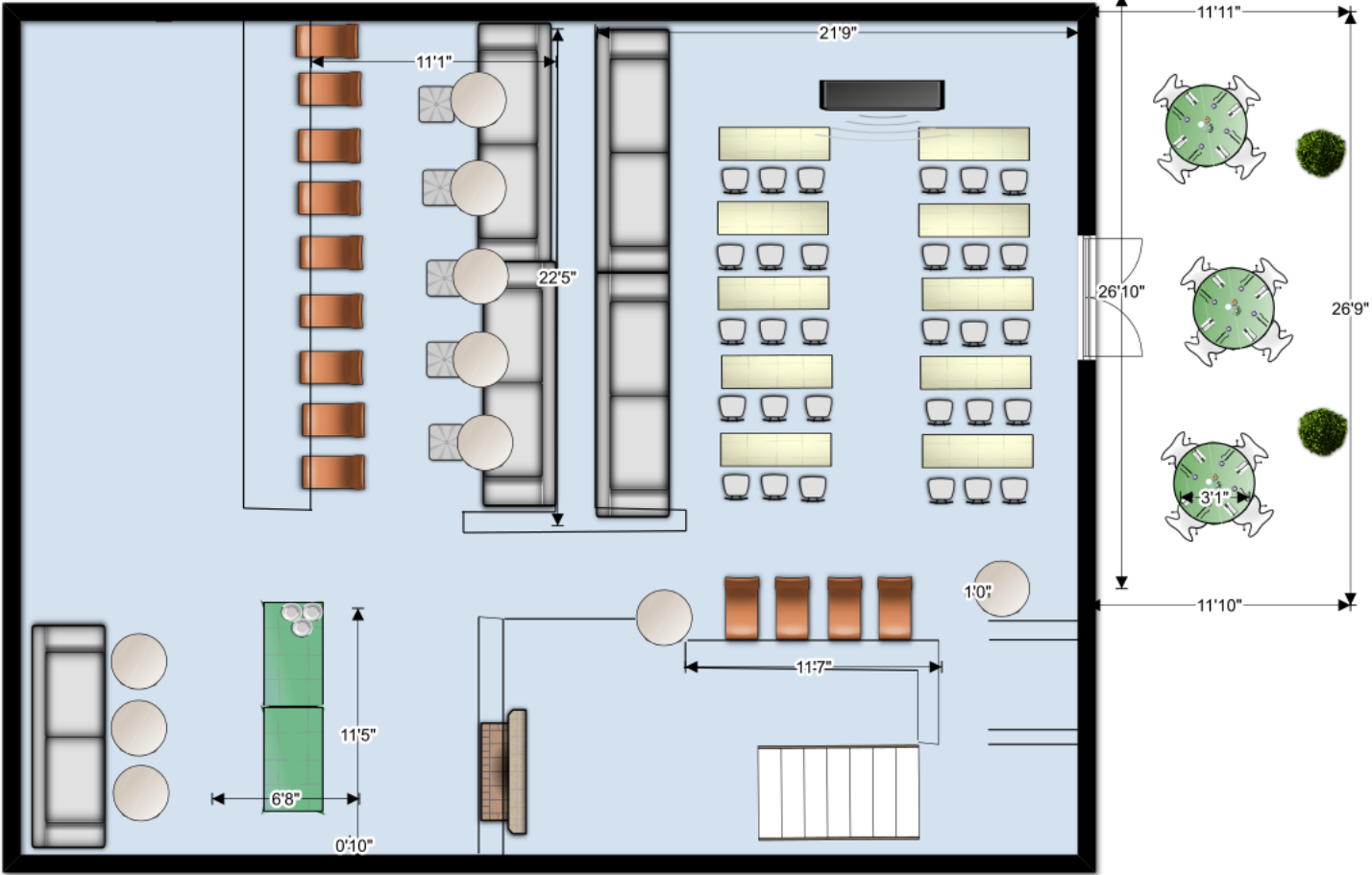
VUE | 517 SW 2nd Street | Corvallis, Oregon 97330 | 541-740-2340 | www.vuecorvallis.com



Plan C5 | 6TH Floor U-Shaped Presentation & Dining

Capacity 25

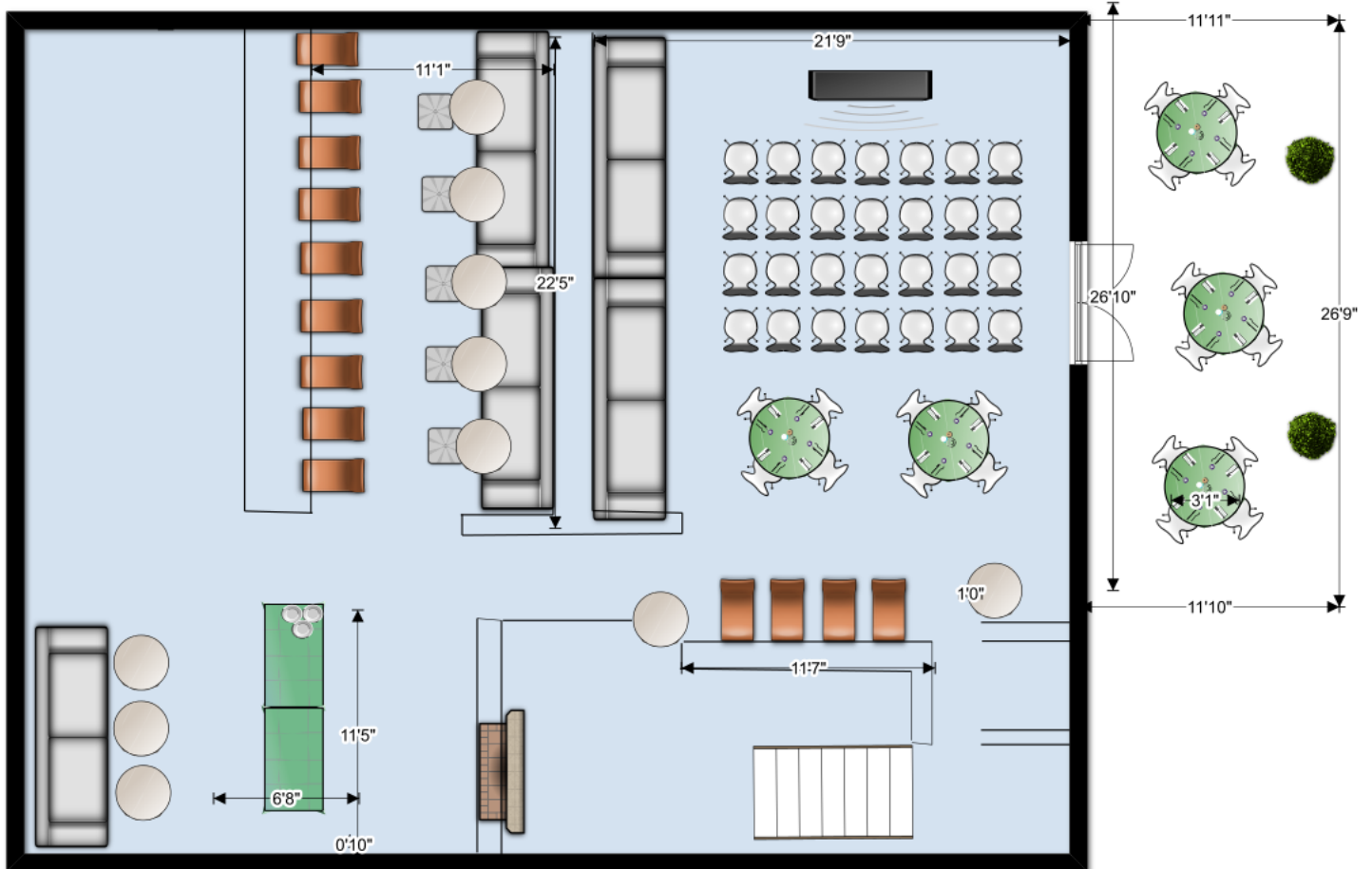
VUE | 517 SW 2nd Street | Corvallis, Oregon 97330 | 541-740-2340 | www.vuecorvallis.com



Plan C6 | 6TH Floor Classroom Presentation & Dining

Capacity 30

VUE | 517 SW 2nd Street | Corvallis, Oregon 97330 | 541-740-2340 | www.vuecorvallis.com



Plan C7 | 6TH Floor Presentation & Dining

Capacity 28

Floor plan of a banquet hall for a wedding reception. The room is 21'9" wide and 26'9" deep. The layout includes a 5x10' head table at the top with 10 chairs (5 on each side). A 10x10' round dance floor is in the center. A 10x10' rectangular table is at the bottom. There are 10 round tables (5' diameter) and 10 rectangular tables (5' x 10'). The room is decorated with 10 round tables (5' diameter) and 10 rectangular tables (5' x 10').

